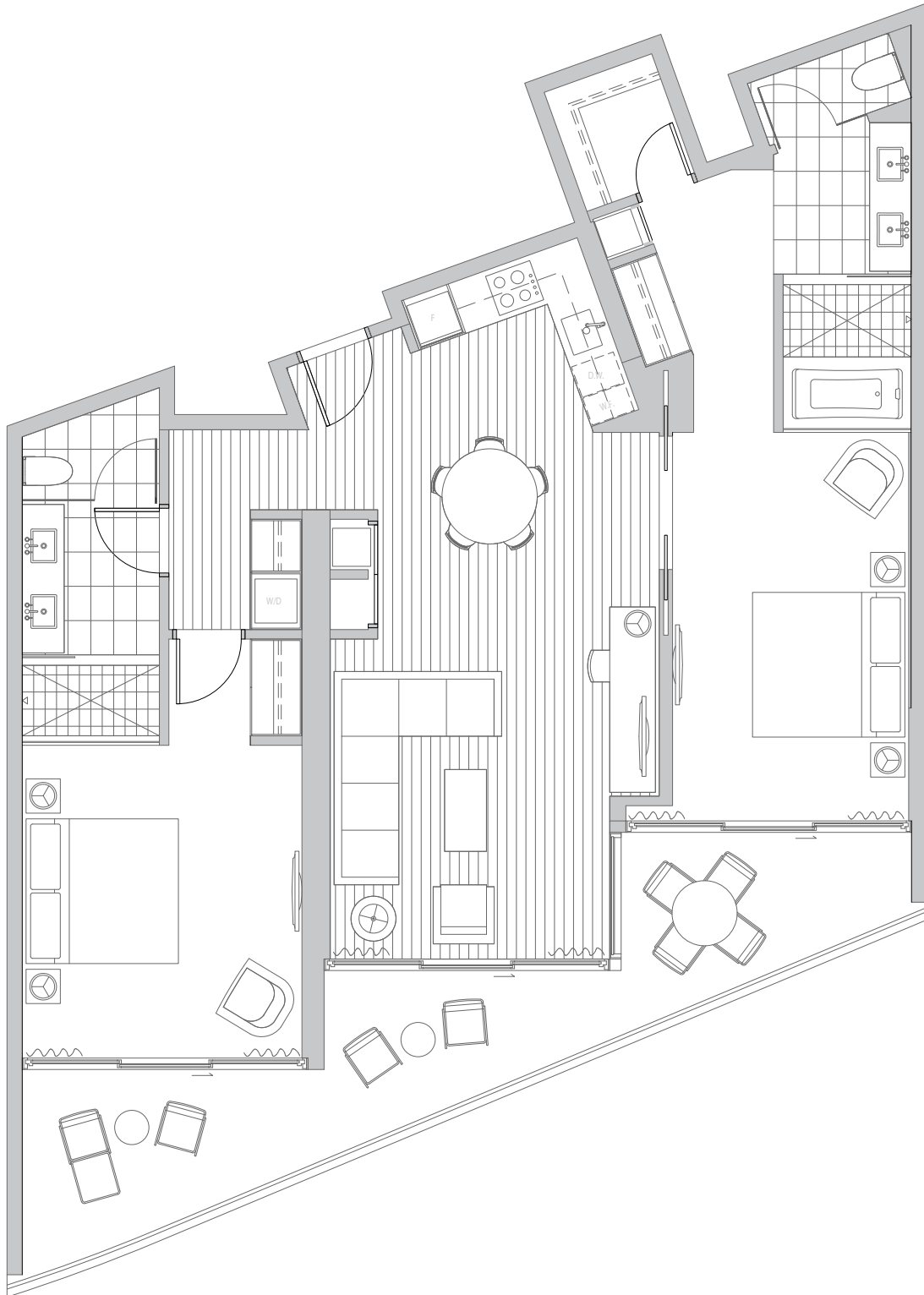




THE RITZ-CARLTON RESIDENCES®
WAIKIKI BEACH



GRAND RESIDENCE - SUPERIOR TWO BEDROOM 08

Approximately 1,202 sq. ft.



The Ritz-Carlton Residences, Waikiki Beach are not owned, developed or sold by The Ritz-Carlton Hotel Company, L.L.C. or its affiliates ("Ritz-Carlton"). Pacrep LLC uses The Ritz-Carlton marks under a license from Ritz-Carlton, which has not confirmed the accuracy of any of the statements or representations made herein. Marketed by S&P Real Estate Corporation. Listed by Oceanfront Realty International. In an effort to continuously improve our features, the developer reserves the right to change or modify plans, materials, specifications without notice. All square footage calculations are approximate. See Condominium Map for details. Renderings and maps are artist's conceptions and may differ from finished product. This is not an offering for sale in any jurisdiction where the project is not registered. E.&O.E.